

FEATURES

- **Environmentally Sealed for Harsh Environments**
- **Convection Cooled**
- **80% Efficiency**
- **Parallelable for Scalable Applications**

DC INPUT

Voltage: 250VDC - 750VDC

Peak Inrush Current: <65A

Efficiency: 80%, 50 to 100% load

Hold-Up Time: 8mS min.

Input: Input Terminal Block

DC Input: White: DC Most Positive input, **Black:** DC Most Negative input, **Green:** Ground (if required)

DC OUTPUT

Voltage: 13.9VDC to 14.1VDC

Power: 1,200W

Ripple & Noise: 1% V P-P Measured with 20Mhz Bandwidth

Line Regulation: Less than $\pm 0.25\%$

Load Regulation: $\pm 1.0\%$ from no load to full load

Parallel use: May be paralleled with other like units for increased system output, redundant diode included

Current Sharing: Slope program current share, (droop)

Droop: 200mv. 0 to 100A

Temperature Coefficient: $< \pm 0.02\%$ per $^{\circ}$ C

Acoustic Noise: None

Output: 100A terminal block

DC Output: Black: 13.8V Most Positive output, **Red:** 13.8V Most Negative output

ELECTRONIC ALARMS AND CONTROLS (low=.6V@1mA) (high=open collector ($I < 50\mu A$) WRT signal RTN)

Signals: Violet: Inhibit, **Orange:** FLT_RTN, **Yellow:** RMT ADJ (0-10V)
Blue: OUT OK (Open Collector), **Brown:** DCOK (Open Collector)

DC OK: low when DC input is in range

Output OK: low if the output voltage is within 10% of the actual set point

Remote Inhibit: Application of a 3.3V@5mA input signal will cause the supply to shut down and an output OK fault alarm will be issued. (3.3V = Inhibit)

Signal RTN: Isolated signal return for all signals except Remote Program.

Remote Program: Provides +X%, -Y% of set point voltage with 0 to 10VDC control signal WRT output return.

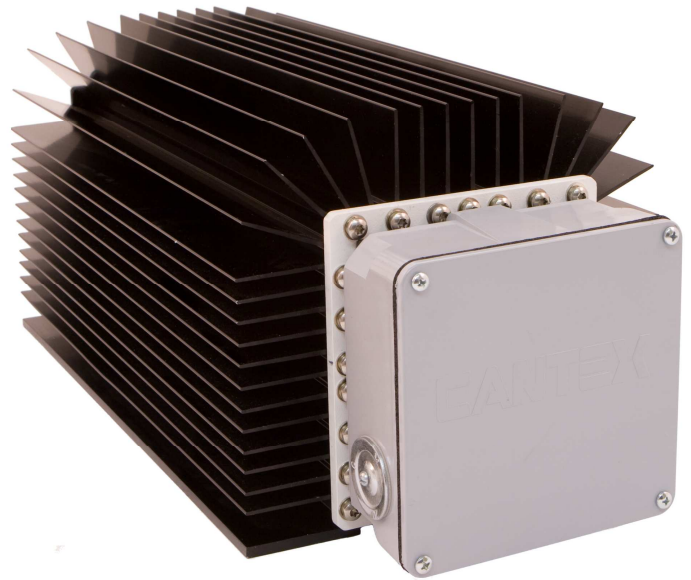
AGENCY COMPLIANCE

RoHS: compliant (lead solder exemption directive)

CE Marked: N/A

EMI (conducted): TBD

EMI (radiated): N/A



PROTECTION

Output Over-Voltage: Shutdown at 14.6V Output Voltage, Recycle of input voltage required to reset OVP circuit.

Output Over current/Short Circuit Protection: Electronic with automatic recovery

Output Over power protection: Electronic

Over-Temperature: Over temperature shutdown with auto recovery

Input Reverse Polarity: Input diode

ENVIRONMENTAL SPECIFICATIONS

Normal Operation: -30 to +50 $^{\circ}$ C Ambient temperature

High Temperature Operation: de-rate 10% per $^{\circ}$ C, 50 to 80 $^{\circ}$ C

Low Temperature Turn On: -40 $^{\circ}$ C Minimum for warm up

Storage / Transportation: -40 $^{\circ}$ C to +80 $^{\circ}$ C

Humidity Operating & Storage: 0% to 100% RH condensing

Vibration, Operating: TBD

Vibration, Transportation: Packaged units will withstand, without damage, two complete cycles from 5Hz to 100Hz to 5Hz: 0.5 g at 0.1 octaves/min. From 100Hz to 500Hz to 100Hz: 1.6 at 0.25 octaves/min.

Shock, Transport: Packaged, drops, 6 faces, 8 corners

Salt Fog: MIL-STD 810C, Method 509.1

Cooling: Oil cooled. No fan required. Needs ventilation to maintain ambient temperature under load.

PHYSICAL DIMENSIONS

Dimensions: H19.56 x W21.84 x D41 cm (7.70 x 8.6 x 16")

Weight: 14.74 kg (32.5 lbs)

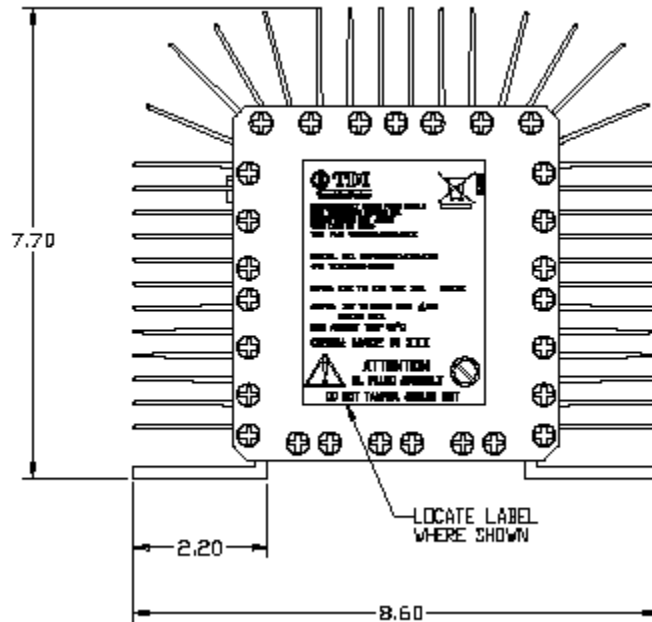
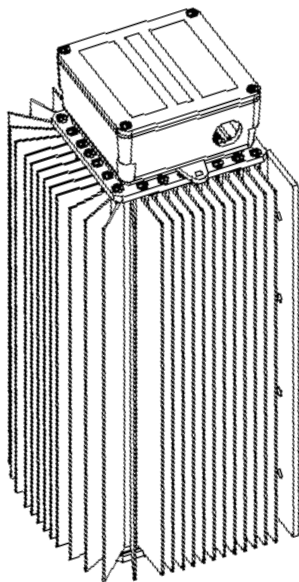
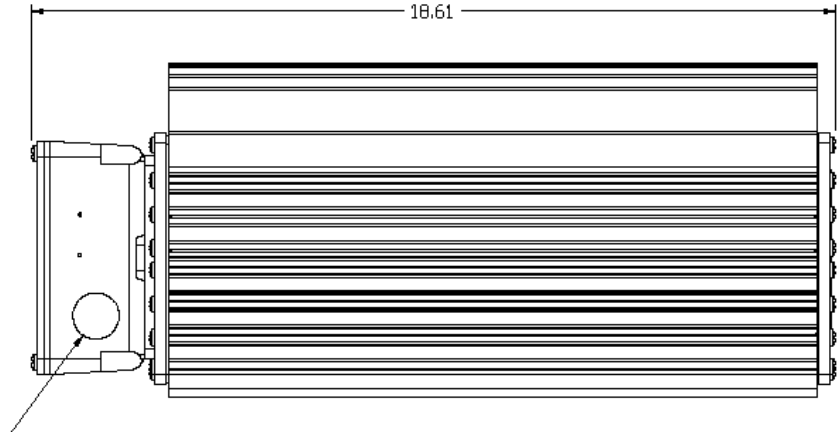
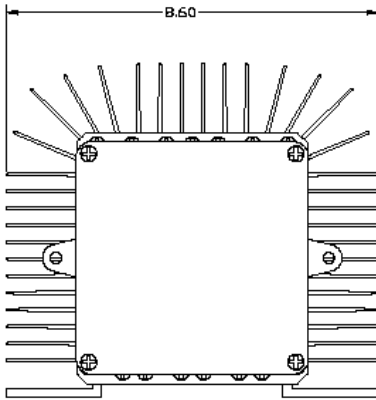
www.tdipower.com

DEMANDING APPLICATIONS DEMAND TDI POWER

© Copyright 2007, Transistor Devices, Inc. 17562RSA

This document is believed to be correct at time of publication and TDI Power accepts no responsibility for consequences from printing errors or inaccuracies. Specifications are subject to change without notice.

MECHANICAL INFORMATION



ORDERING INFORMATION

Part no.	Description
143646-P12-001	1200W, DC-DC ESPM, 13.9VDC

Global Contact Information

Asia, Australia, New Zealand: T: +86 755 668 3376 • F: +86 755 668 8797

EMEA: T: +353 21 4214573 • F: +353 21 4214574

North / South America & Canada: T: +1 908 850 5088 • F: +1 908 850 1607



www.tdipower.com

DEMANDING APPLICATIONS DEMAND TDI POWER

© Copyright 2007, Transistor Devices, Inc. 17562RSA

This document is believed to be correct at time of publication and TDI Power accepts no responsibility for consequences from printing errors or inaccuracies. Specifications are subject to change without notice.