

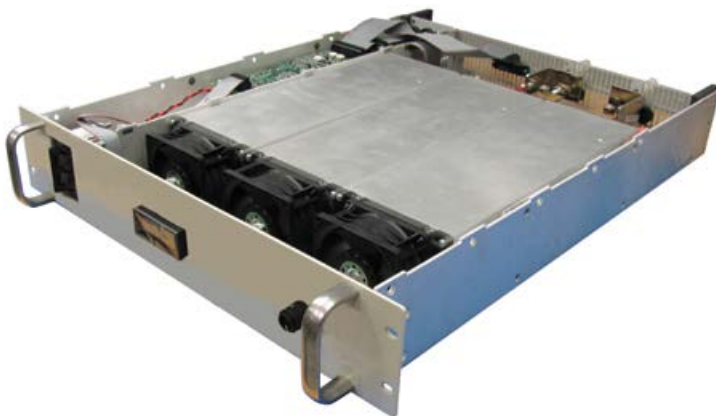
INDUSTRIAL GRADE CURRENT & VOLTAGE SOURCES

TDI Power's range of **INDUSTRIAL CURRENT AND VOLTAGE SOURCES** suit a wide range of industrial applications. Modular Mercury power converter solutions can be configured within a 2U high 19" sub-shelf offering up to 10.2kW. Rack systems are capable of providing 100kW or more. Fan or liquid cooled solutions for single phase or three phase inputs suit most industrial applications.



General Features:

- Modular high precision solution
- 0 to 250A, 0 to 85V
- Up to 10.2kW in 2U
- Local or remote control of current or voltage from zero to full power
- Single phase or three phase 208V or 380V/480V AC (no neutral required)
- Remote or Local Front Panel Programming
- Local display of output voltage or current
- Industry leading reliability, 100% HASS tested
- Designed for maximum uptime and assurance of process



Applications:

- LED / semiconductor Fabrication
- Industrial processing
- Magnet drives
- Industrial lasers
- Industrial processing



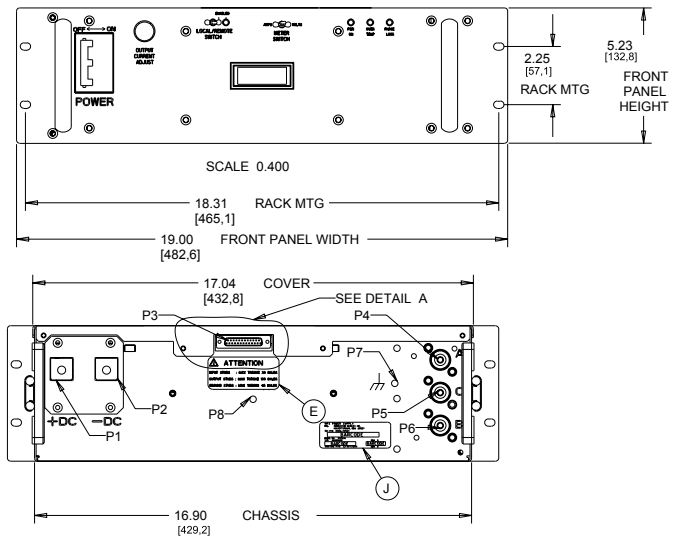
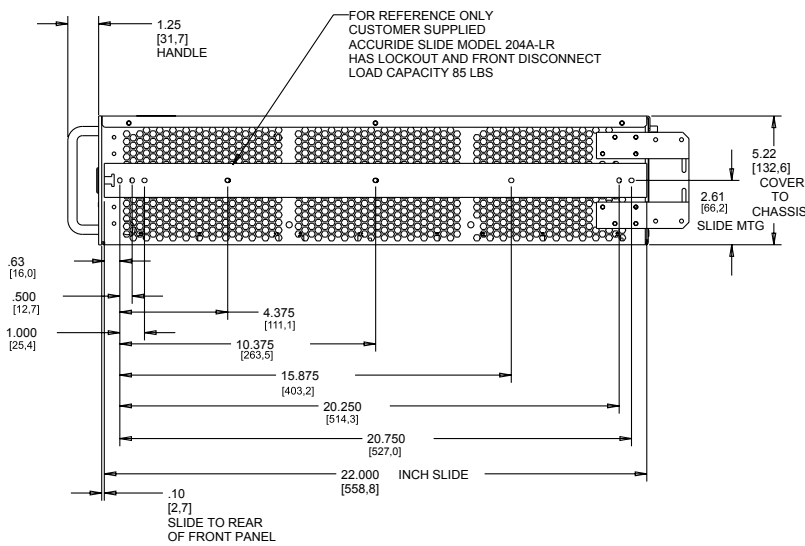
CONSTANT CURRENT SOURCE

0-150A, UP TO 35V, 3 PHASE 3 WIRE (DELTA)



Features:

- 0-150A DC adjustable output
- 35VDC voltage compliance
- 208VAC 3 phase input
- Remote monitoring and control via 0 – 5VDC
- Analog signals
- Digital front panel metering
- Very low ripple current (75 mA)
- 5kW power rated



SPECIFICATIONS

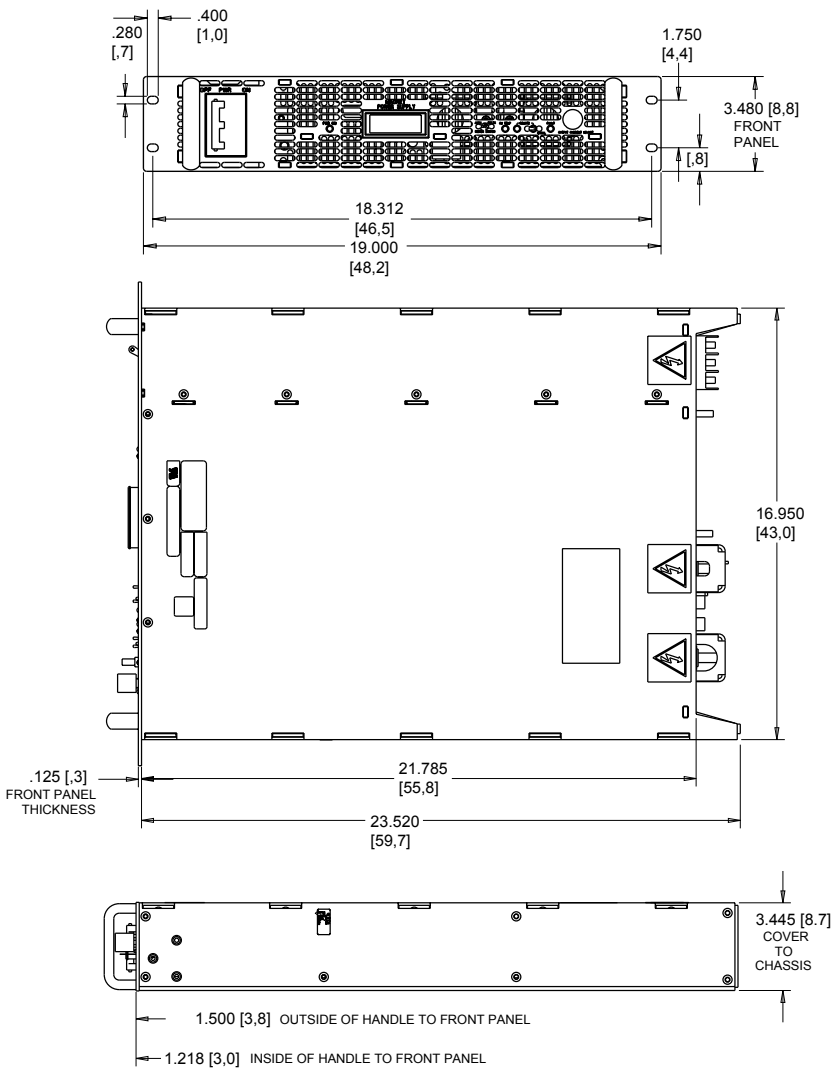
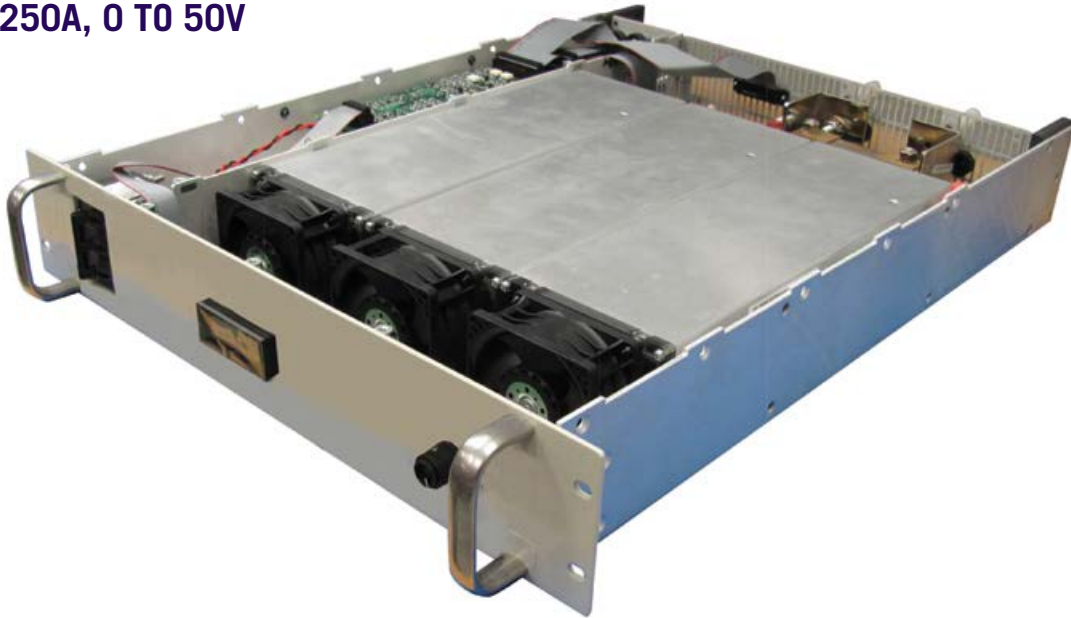
Input	
Voltage	190 -250VAC 3 phase
Frequency	47 to 63 Hz
Configuration:	4 wire, 3 phase plus ground
DC Output	
current	0-150 ADC +/- 1%
Regulation	+/- 0.1% line and load regulation
Voltage	up to 35 VDC
ripple	75mA p-p @ maximum current
Power	5kW maximum
User Interface Features	
Output monitoring	Vmon: 0-5VDC = 0-35VDC Imon: 0-5VDC = 0-150ADC
Output control	Iprogram 0-5VDC = 0-150ADC
Local Control	10 turn potentiometer on front panel
Interface connector	DB25
Metering	Digital voltmeter/ammeter on front panel

SPECIFICATIONS

Environmental Conditions	
Cooling	Fan Cooled
Ambient Operating Temp	0 to +40°C
Storage Temperature	-20 to +85°C
Humidity	0 to 95% non-condensing, operating and storage
Agency Compliance	
TSAFETY	IEC60950
EMI	FCC Class A conducted emissions
Mechanical	
Size	Standard 19" Rack, 3U high, 21" depth
Weight	70 lbs 31.75 kgs
Input Connector	Four 1/4-20 studs
Output Connector	Four 3/8-16 studs

2U, 3 PHASE INPUT

10kW, 0 TO 250A, 0 TO 50V



SPECIFICATIONS	
Input	3 phase 208V delta 50/60Hz (no neutral)
Voltage	190V to 250V (no damage to 300V)
Current	<60A per phase
Power Factor	>.95 (typical)
Protection	Front panel 3 phase circuit breaker. Power modules have internal fuse
Output	Continuously adjustable current source
current	0 to 250A
Voltage	0 to 50V
Power	10.2kW max
Adjustment	Local—10 turn front panel potentiometer Remote—0 to 10V analog signal
Ripple / Noise Current	<75mA pp @ 250A (DC to 1kHz)
Load regulation	0.1% over entire range of line and load variations in current mode (for load currents in range 15A to 250A)
Mechanical	
Size	19" rack mount x 2U high x 24" deep



3 PHASE 380/480V INPUT 4U LIQUID COOLED

15kW, 0 TO 250A, 0 TO 60V



SPECIFICATIONS	
Input	3 phase 380/480V delta 50/60Hz (no neutral)
Voltage	360V to 528V
Current	<45A per phase
Power Factor	>.95 (typical)
Protection	Power modules have internal fuse
Output	Continuously adjustable current source
Current	0 to 250A
Voltage	0 to 60V
Power	15kW max
Adjustment	Local—10 turn front panel potentiometer Remote—0 to 10V analog signal
Ripple / Noise Current	<75mA pp @ 250A (DC to 1kHz)
Load regulation	<0.1% over entire range of line and load variations in current mode (for load currents in range 15A to 250A)
Mechanical	
Size	19" rack mount x 4U high x 26" deep
Cooling Water	2 US gpm at 18°C to 25°C

